



What's new?

CycloLog 2024

Version 2024 -September

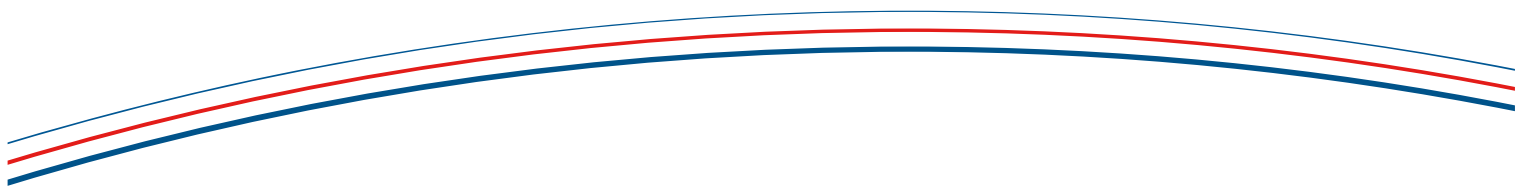


PANterra



ENRES
INTERNATIONAL

TECHNICAL ALLIANCE



CycloLog® 2024

PanTerra Geoconsultants continues to innovate CycloLog® software and Geological services.

The intensive use of CycloLog in well correlation studies has led to ideas and opportunities for improvement. We are grateful for the user feedback that allowed us to improve and hope you will enjoy working with the new CycloLog® 2024.

Release features

StratiSolver®

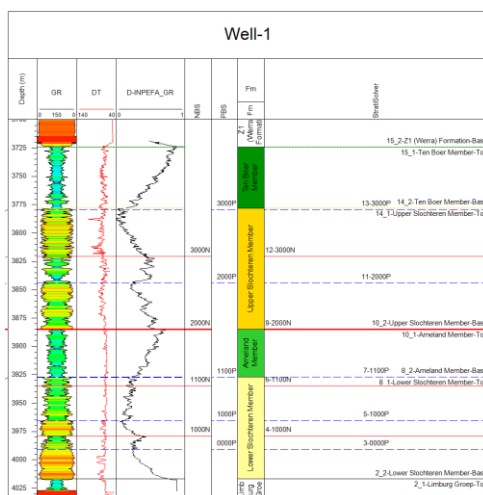
StratiSolver® - A powerful new algorithm to combine stratigraphic data into a single chronologically numbered break set. Without prior knowledge of the stratigraphy.

This provides a quick consistent overview of the stratigraphic input data. The user can:

- Check consistency datasets against each other.
- Combine and display combined stratigraphic dataset.
- Generate relative Stratigraphic numbering, with uncertainties highlighted.
- Obtain clear overview tables.

StratiSolver includes tools to ignore a percentage of outliers to allow quick stratigraphic summary before going into detailed analysis.

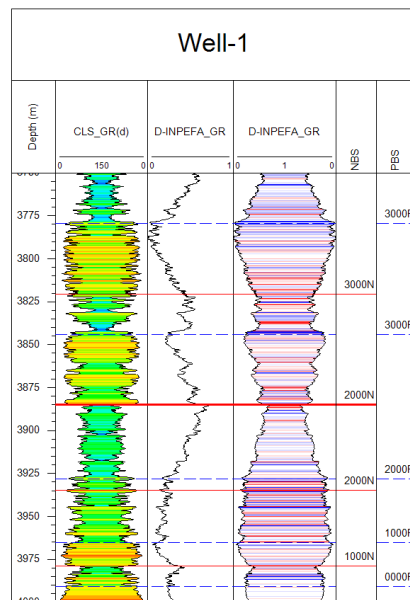
The below well-chart includes a break column with all stratigraphic events chronologically numbered. The numbering is consistent in the entire dataset, so a missing number/event in a well is a event counted in another well. The results table on the right includes all input data with depths in relative chronology.



Strat num	Name	Original set	Well-10	Well-18	Well-33	Well-02
16	Coppershale Member-Top	Fm - Fm		3297.00	3560.00	3675.00
15_2	Coppershale Member-Base	Fm - Fm		3298.00	3562.00	3676.00
15_1	Ten Boer Member-Top	Fm - Fm	3724.00	3298.00	3562.00	3676.00
14_2	Ten Boer Member-Base	Fm - Fm	3778.00	3311.00	3583.00	3735.00
14_1	Upper Slochteren Member-Top	Fm - Fm	3778.00	3311.00	3583.00	3735.00
13	3000P	PBS	3779.24	3311.45	3583.15	3738.38
12	3000N	NBS	3820.47			3771.75
11	2000P	PBS	3843.95			3783.30
10_2	Upper Slochteren Member-Base	Fm - Fm	3885.00	3461.00	3725.00	3814.00
10_1	Ameland Member-Top	Fm - Fm	3885.00	3461.00	3725.00	3814.00
9	2000N	NBS	3885.26			3815.03
8_2	Ameland Member-Base	Fm - Fm	3927.00	3494.00	3761.00	3883.00
8_1	Lower Slochteren Member-Top	Fm - Fm	3927.00	3494.00	3761.00	3883.00
7	1100P	PBS	3927.34	3517.69	3767.83	3884.92
6	1100N	NBS	3934.65			
5	1000P	PBS	3965.15			
4	1000N	NBS	3978.75			
3	0000P	PBS	3990.71			
2_2	Lower Slochteren Member-Base	Fm - Fm	4017.00	3634.00	3840.00	3944.00
2_1	Limburg Groep-Top	Fm - Fm	4017.00	3634.00		3944.00
1	Limburg Groep-Base	Fm - Fm	4036.00	3664.00		3993.00

Mirror Gradient fill

It is possible to make a gradient fill in the mirror log, also with data from a different log.



Edit Display - Break Set and Reservoir Set

The breaks and reservoirs in reservoirs are always stored in a 'Set' when opening the dialog this Set-name is now visible.

#w for well names

When making a composite well chart, you can customise the title of the chart quickly by using #w for the well name. The well name is then in the chart and kept consistent with changes.

Adding new Set, able to add to all wells in project.

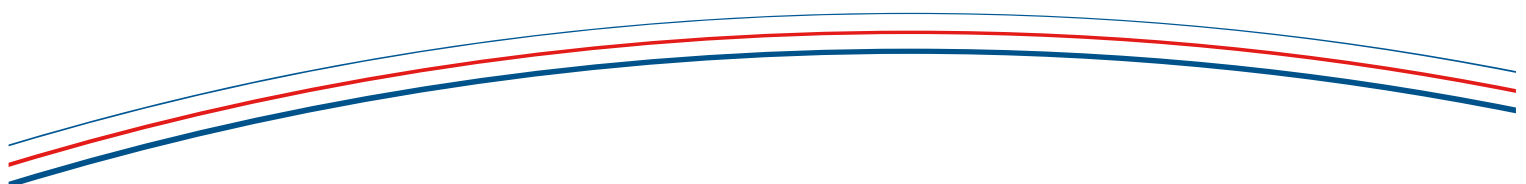
To reduce time spent on the creation of Break and Reservoir Sets in a project. When adding a break set you can now tick the box to add the new empty set in all wells.

Selecting breaks reservoirs in columns of composite chart and correlation panels.

Improving the ease of selecting breaks and reservoirs from different datasets in the Composite Well Chart. Using mouse selection on a location in a Reservoir column or Break column will only select Reservoirs and Breaks displayed in that specific column. Previously breaks and reservoirs drawn on top of each other could be difficult to select.

Additional optimisations:

- Improved behaviour of break reservoir columns in batch CWC generation.
- Edit breaks and Edit reservoirs under file, now allows access to all wells.



Compatibility

The CodeMeter and AxProtector technology developed by WIBU-Systems performs licensing and protection of CycloLog® 2024 software. The encryption technology and CycloLog® 2024 software are compatible with Windows 10 and 11.

Improvements in the installers, updates for new data:

- New installer package for licence server.
- The CycloLog installer has the updated codemeter control center.

A detailed list of improvements and bug fixes can be found in the CycloLog 2024 Release Notes document that can be downloaded from: <https://cyclolog.com/software/cyclolog/>

Contact

Please contact the PanTerra Geoconsultants Support team for any questions about the CycloLog® software or for suggestions that can help us to improve our software. We strongly rely on Users to provide ideas for improvements, not only to the software but also to all related documentation.

Contact our support team at: cyclolog@panterra.nl, or call: +31 (0) 71 58 13 505 Our normal office hours are CET, from 9 AM to 5 PM, Monday to Friday.

PanTerra Geoconsultants

Weversbaan 1-3
2352 BZ Leiderdorp
The Netherlands

Email:
cyclolog@panterra.nl

Website:
www.panterra.nl
www.cyclolog.com

Copyright notices and disclaimers

Trademark Information

INPEFA®, CycloLog®, STRATISOLVER® and ENRES International are registered trademarks of ENRES International and PanTerra Geoconsultants B.V. *Copyright © 2024 All rights reserved.*

No part of this document may be reproduced or transmitted in any form or by any means, electronic or mechanical, for any purpose, without written consent of PanTerra Geoconsultants. Under the law, reproducing includes translating into another language or format. As between the Parties, ENRES International retains title to, and ownership of, all proprietary rights with respect to the software contained within its products. The software is protected by copyright laws. Therefore, you must treat the software like any other copyrighted material (e.g., a book or sound recording). Every effort has been made to ensure that the information in this user guide is accurate. PanTerra Geoconsultants is not responsible for printing or clerical errors. Information in this document is subject to change without notice.

