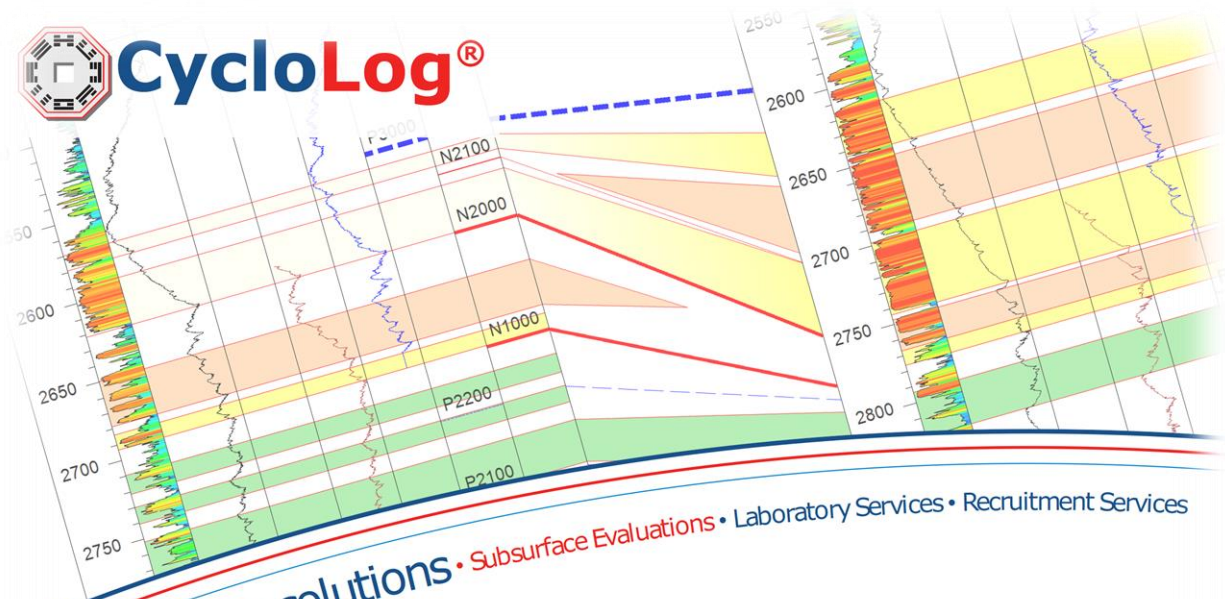




CycloLog®



From data to solutions • Subsurface Evaluations • Laboratory Services • Recruitment Services

What's new?

CycloLog® 2019

From data to solutions • Subsurface Evaluations • Laboratory Services • Recruitment Services

 
TECHNICAL ALLIANCE

Version 2019 - January 2019

The Technical Alliance

2018 was the year that ENRES International and PanTerra Geoconsultants have formed a technical Alliance. This cooperation is aimed to the complete integration of the Software and the Geological services offered by PanTerra Geoconsultants. The collaboration has resulted in the transfer of all daily operations including support, development and studies to PanTerra Geoconsultants in 2018.

CycloLog workflows can be integrated with expertise on petrophysics, borehole images, core analysis, seismic interpretation reservoir engineering, petrography and reservoir modelling, providing a unique ability to perform complex projects and provide practical solutions.

Thank you for your feedback that allowed us to develop CycloLog® 2019.

Release features

Strengthen software foundations

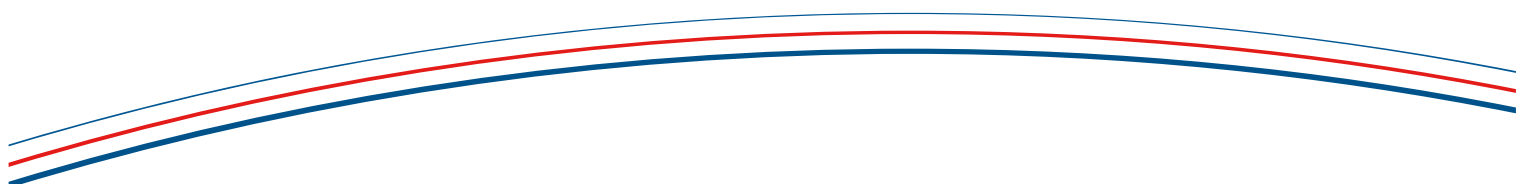
CycloLog 2019 has profound improvements to the foundation of the program, allowing the software to be future proof. These fundamental changes were needed to allow our long term development strategy and enable us to constantly improve CycloLog with new updates/features. The improvements have not altered the software interface, avoiding the need of updating the users' training. Nevertheless, the new release will offer a better user experience thanks to the availability of new intuitive commands and improved features

Improvements

We have performed a series of improvements which were implemented to the software.

- Customization of the workspace have been improved, now allowing undocked workspace windows.
- Modified Delta log R method. The workflow to calculate Total Organic Carbon from the wireline logs was improved by better input options for the Total Organic Carbon calibration
- Tadpole plot input has been adjusted to load dip direction, i.e. azimuth
- It is now possible to duplicate the correlation panel
- Increase resolution screen compatibility
- Exporting breaks was improved now also allowing comments to be included
- Importing log files is made more easy by adding info on the file type

A detailed list of improvements and bug fixes can be found in the CycloLog 2019 Release Notes document that can be downloaded from: <http://enresinternational.com/software/cyclog/>



Compatibility

The CodeMeter and AxProtector technology developed by WIBU-Systems is used for licensing as well as protection of CycloLog® 2019 software. The encryption technology and CycloLog® 2019 software are compatible with Windows 10.

Contact

Please contact the PanTerra Geoconsultants Support team for any questions about the CycloLog® software or for suggestions that help us to improve our software. We strongly rely on its users to provide suggestions for improvements, not only to the software but also to all related documentation.

Contact our support team at: cycloLog@panterra.nl, or call: +31 (0) 71 58 13 501 Our normal office hours are CET, from 9 AM to 5 PM, Monday to Friday.

PanTerra Geoconsultants

Weversbaan 1-3
2352 BZ Leiderdorp
The Netherlands

cycloLog@panterra.nl

www.panterra.nl

www.enresinternational.com

Copyright notices and disclaimers

Trademark Information

INPEFA®, CycloLog® and ENRES International are registered trademarks of ENRES International and Panterra Geoconsultants. *Copyright © 2019 All rights reserved*

No part of this document may be reproduced or transmitted in any form or by any means, electronic or mechanical, for any purpose, without written consent of PanTerra Geoconsultants. Under the law, reproducing includes translating into another language or format. As between the Parties, ENRES International retains title to, and ownership of, all proprietary rights with respect to the software contained within its products. The software is protected by copyright laws. Therefore, you must treat the software like any other copyrighted material (e.g., a book or sound recording). Every effort has been made to ensure that the information in this user guide is accurate. PanTerra Geoconsultants is not responsible for printing or clerical errors. Information in this document is subject to change without notice

