

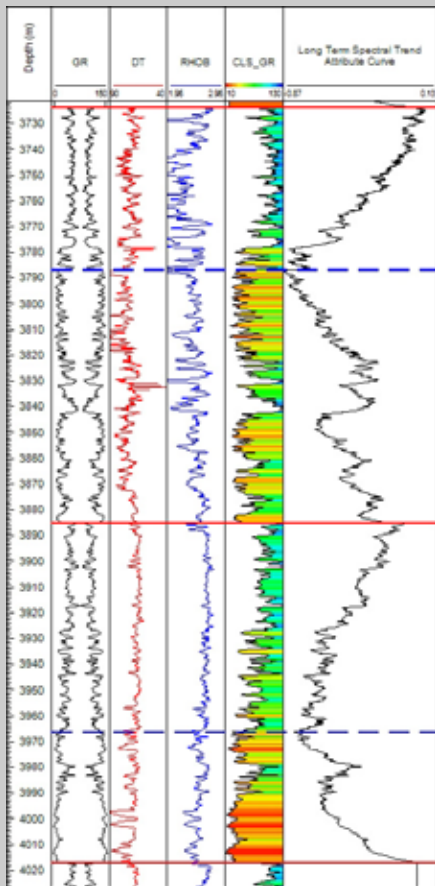
Best Practice Field Seminar

ALLUVIAL-FLUVIAL RESERVOIRS ORBITAL-FORCING STRATIGRAPHY & MODELLING OF OUTCROP ANALOGUES

A FIELD COURSE TO THE TREMP-GRAUS AND EBRO BASINS,
SOUTH-CENTRAL PYRENEES, SPAIN

14 - 19 September 2015

*Introduction to orbital-forcing sedimentology
and stratigraphy: a new interpretation
approach in alluvial-fluvial sedimentary facies
variability in time and in subsurface
stratigraphic correlation*



*The course provides in-depth knowledge of accurate and
time-efficient workflows for subsurface fluvial reservoir
correlation and characterisation*

**ENRES
INTERNATIONAL**



ALLUVIAL-FLUVIAL RESERVOIRS

ORBITAL-FORCING STRATIGRAPHY & MODELLING OF OUTCROP ANALOGUES

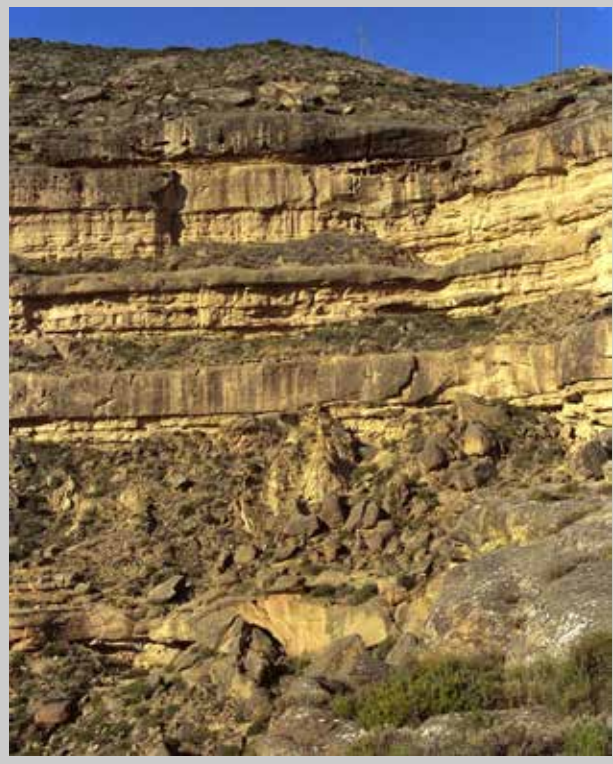


FIELD SEMINAR 14 - 19 SEPTEMBER 2015

Best Practice Field Seminar

Orbital-Forcing Stratigraphy & Modelling of Alluvial-Fluvial Outcrop Analogues

ENRES International organises a 5-days non-exclusive field course in the south-central Pyrenees and Ebro basin in Spain. During the course, the concepts of orbital-forcing climate change in sedimentology and stratigraphy and its relation to spatial and time variations of alluvial-fluvial depositional facies will be presented. A unique software has been developed for the analysis of orbital-forcing stratigraphy in the subsurface: the INPEFA Log Transform. Interpretation of the INPEFA Log Transform in terms of orbital-forcing climate change will be demonstrated in the outcrop analogues and its application to subsurface reservoir correlation and characterisation will be discussed.



Some of the topics

- > introduction to the principles of orbital-forcing stratigraphy and climate change
- > relationship of orbital-forcing climate change and development of alluvial-fluvial depositional facies in time and space
- > stratigraphy of fluvial sandbodies and their geometrical dimensions in outcrop and the subsurface
- > from outcrop analogues to the subsurface - correlation of fluvial sandbodies
- > orbital-forcing climate change and alluvial-fluvial reservoir characterisation
- > parameters of fluvial reservoirs necessary for static modelling

For information and costs please contact:

training@enresinternational.com

To download this brochure and program - visit our website www.enresinternational.com
Go to Services - Field Seminars

