



**ENRES INTERNATIONAL**

Stratigraphic Correlation Experts



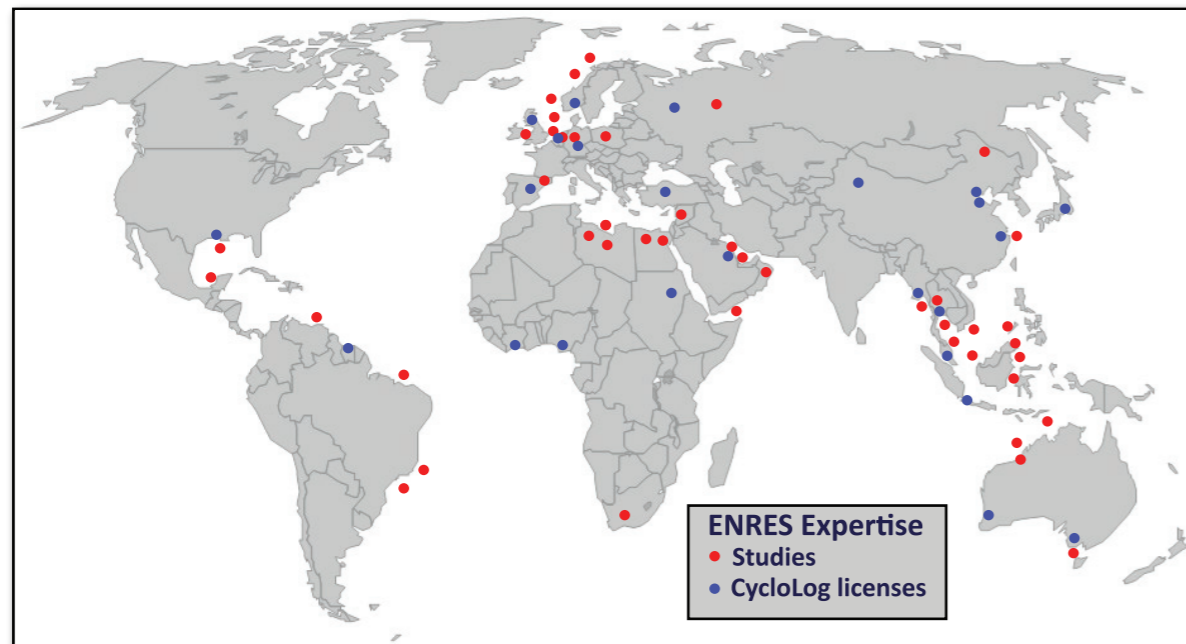
**ENRES INTERNATIONAL**

Stratigraphic Correlation Experts

With its roots firmly attached in geoscience academics, ENRES International was founded in 1987. The company originated from the insight that an innovative, objective approach in well log correlation was essential for resolving stratigraphic challenges.

This led to the development of INPEFA<sup>®</sup>, which is the base of our software and services.

## Global Expertise



If you would like to know more about us, our services or software then please contact us:

Email: [sales@enresinternational.com](mailto:sales@enresinternational.com)  
Tel: +31 30 227 0137  
[www.enresinternational.com](http://www.enresinternational.com)

You can also visit us personally at our head office:

ENRES International  
Euclideslaan 201  
3584BS Utrecht  
Netherlands

Software and Services

Stratigraphic Well Log Interpretation





## ENRES at work for you

ENRES International is an independent stratigraphic software vendor and consultant. Our global customer base includes multinationals, governments and academic institutions.

We focus on solving the stratigraphic challenges that our clients are facing, using our unique and innovative approach - **INPEFA**<sup>®</sup> - which is the base of our software and services.

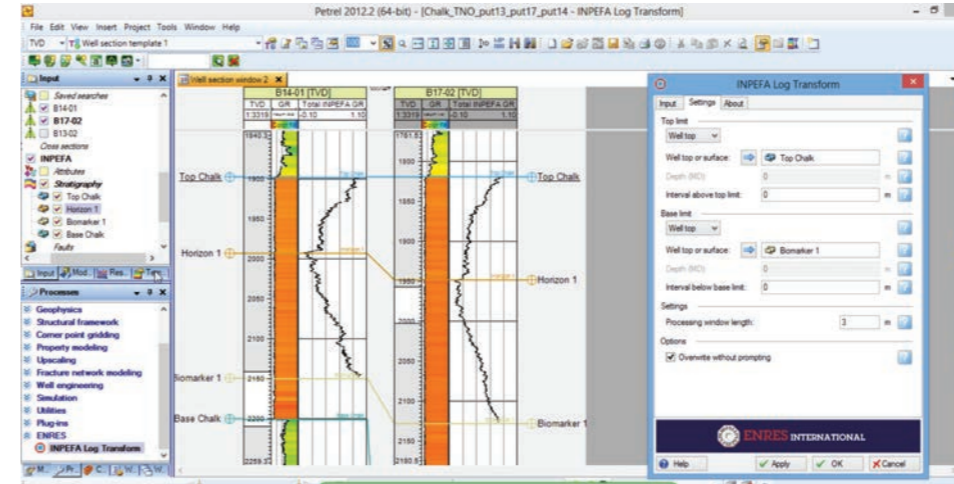
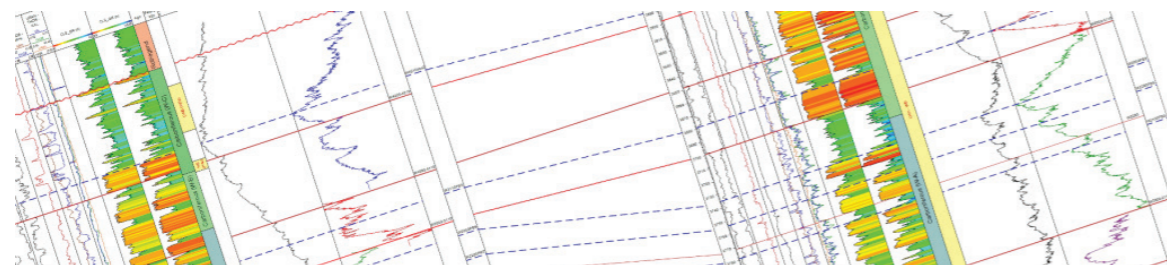
## Would you like expert stratigraphers to help you get the best results?

### SERVICES

ENRES stratigraphers have worked globally for over 25 years enhancing client workflows and results with their flexible approach. Our proven track record includes both exclusive and multi-client well correlation projects. We have obtained extensive experience in correlating wells in a wide range of basins and depositional settings.

With our specialist software product CycloLog<sup>®</sup>, our team works with clients to help establish and evaluate exploration to reservoir scale stratigraphic correlation frameworks. Once these have been established we can generate thickness maps of individual stratigraphic packages.

If you would like help with your well correlation projects please contact our experienced team at [sales@enresinternational.com](mailto:sales@enresinternational.com) or call +31 30 227 0137



### SOFTWARE

#### CYCLOLOG<sup>®</sup>

In many hydrocarbon fields, stratigraphic information such as bio- or chemostratigraphic data do not provide sufficient constraints for well correlation. Consequently, correlations and stratigraphic models derived from them can remain uncertain or lack required resolution. CycloLog<sup>®</sup> is well correlation software which:

- Helps reduce uncertainty in well correlations when constraints are limited
- Enables you to use faster and more accurate interpretation methods
- Allows results to be reproduced
- Is fast and versatile
- Limits bias
- Has efficient workflows
- Allows in-depth analysis of your logs
- Has a fast and informative log display

**INPEFA PLUG-IN FOR PETREL\*** allows you to:

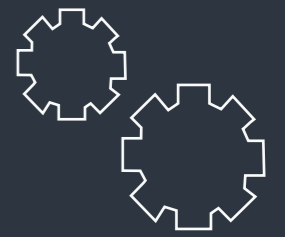
- Enhance well interpretation methods
- Use familiar workflows
- Limit costs
- Obtain quick results
- Limit bias

\*Petrel is a mark of Schlumberger

### COMING SOON:

#### RTS (REAL TIME STRATIGRAPHY)

Accurate correlation of incoming Logging While Drilling (LWD) data to a stratigraphic framework or calibration well.



### What is INPEFA<sup>®</sup>?

INPEFA<sup>®</sup> adds value to existing workflows by enhancing interpretation methods.

INPEFA<sup>®</sup> is data (not model) driven and when applied to well logs reflecting lithology, INPEFA<sup>®</sup> generates curves displaying discontinuities in the data. These can be interpreted geologically as:

- hiatuses,
- erosional surfaces
- changes in lithology
- changes in sedimentation rate.

INPEFA<sup>®</sup> curves are extremely helpful when making exploration to reservoir scale correlations.

To learn more about INPEFA<sup>®</sup>, please visit our website [www.enresinternational.com](http://www.enresinternational.com)

